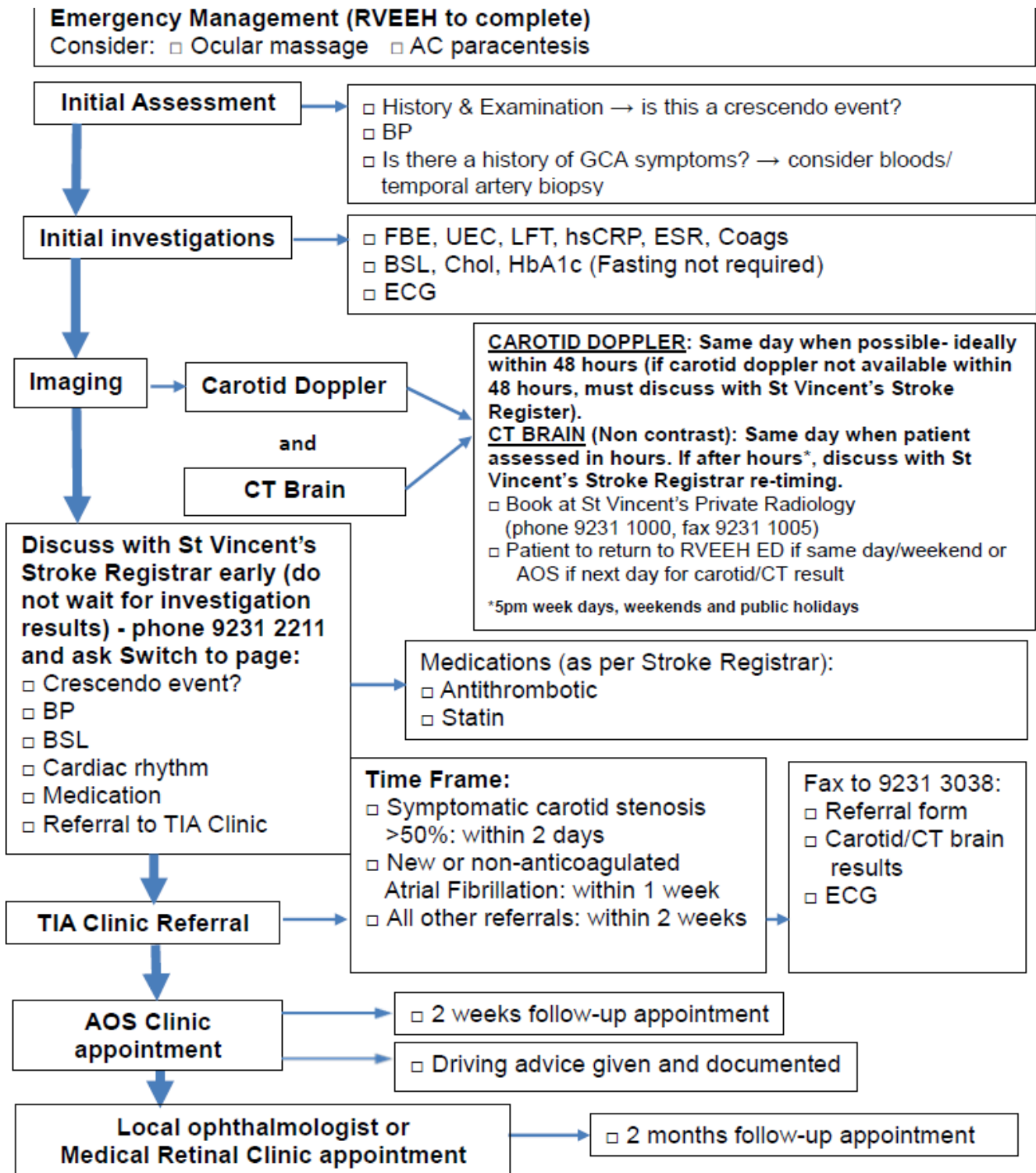


EMERGENCY DEPARTMENT CLINICAL PATHWAY

Disclaimer

Central/Branch Retinal Artery Occlusion & Amaurosis Fugax



Date of next review: 08/11/2022

CPG Suite General Disclaimer

These CPGs were written for use in the RVEEH speciality Emergency Department. They should be used under the guidance of an ENT or Ophthalmology registrar, and certain medications / procedures should only be undertaken by speciality registrars.

If you require clinical advice, please contact our admitting officer for assistance:
EYE: 03 9929 8033 ENT: 03 9929 8032